



USER MANUAL

E6GOLF.COM



CONTENTS

- INSTALLATION 1
 - System Requirements 3
 - E6Golf Software Installation 3
 - Security Dongle 4
- GETTING STARTED 5
 - Launch E6Golf 5
 - Main Menu 5
- STARTING A NEW ROUND 6
 - Play 6
 - Players 6
 - Courses 7
 - Golf Course List 7
 - Settings 9
 - Holes To Play 11
 - Modes of Play 12
 - Start 12
- PLAYING A ROUND 13
 - On Screen Interface 13
 - E6 Menu 14
 - AIMING YOUR SHOT 16
- SWING ANALYSIS: POST SHOT 17
- PRACTICE 18
 - DRIVING RANGE 19
 - On Screen Interface 19
 - PRACTICE SESSION 20
 - Players 20
 - Sessions 21
 - Clubs 21
 - Shots 22
 - THE SCORING ZONE 22
 - CHIP & PUTT 24
- ONLINE EVENTS 25
 - Players 25
 - Events 25
 - Start 26
- CREATE EVENT 26

CUSTOMER SUPPORT

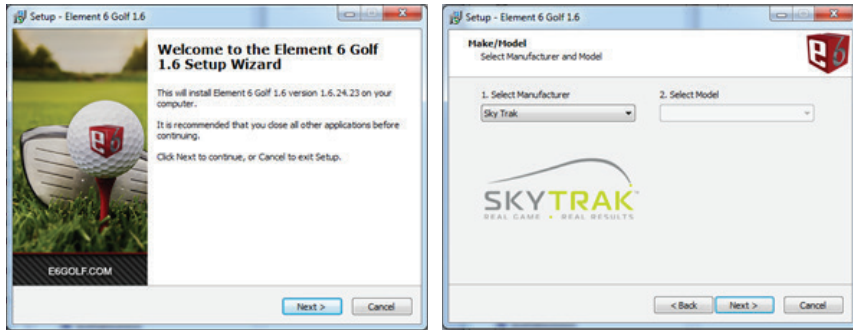
Monday - Friday
 9:00am - 5:00pm MST
 Toll Free: 877-711-6691
 Direct Line: 801-677-1123

Warning: DO NOT insert the dongle into the PC BEFORE installing E6Golf, as the driver for the dongle will not install correctly.

INSTALLATION

METHOD 1 (Direct Connection - USB)

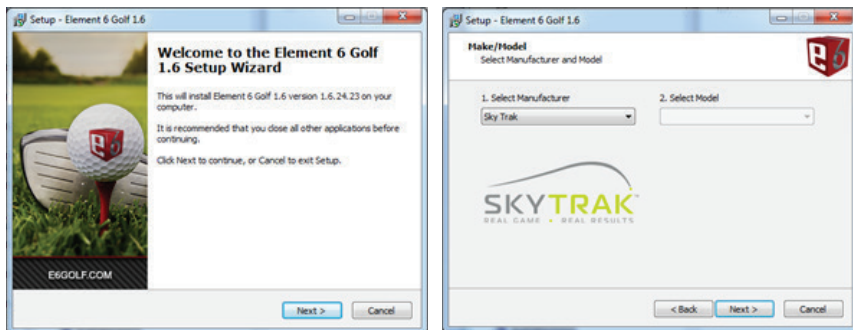
Install E6 on the PC. The SkyTrak will be the default option



- STEP 1:** Once E6Golf is installed, insert the Security Dongle in an open USB port. The Operating system should detect the dongle and install the driver.
- STEP 2:** Once the App is installed attach the SkyTrak Unit to the PC, via micro to standard USB connection cable.
- STEP 3:** Turn on the SkyTrak unit and Launch the E6 software. Once on the TruGolf menu page the bottom two SkyTrak LEDs will be green.
- STEP 4:** Select your course or practice range. Once on the range, or course tee, the top light will turn green, indicating you are ready to play.

METHOD 2 (Network Mode, No Cables Required)

Install E6 on the PC. The SkyTrak will be the default option

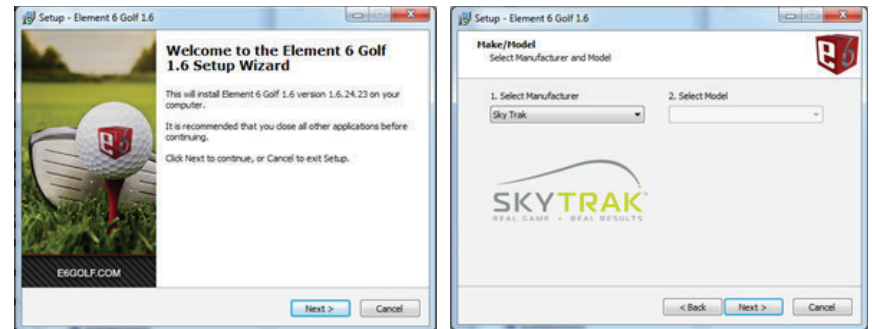


INSTALLATION

- STEP 1:** Once E6Golf is installed, insert the Security Dongle in an open USB port. The Operating system should detect the dongle and install the driver.
- STEP 2:** Consult the SkyTrak User Guide and set up the unit in Network Mode. Once completed the center LED on the SkyTrak unit will show an Amber light
- STEP 3:** Launch the E6 software. Once on the TruGolf menu page the bottom two SkyTrak LEDs will be green.
- STEP 4:** Select your course or practice range. Once on the driving range, or course tee, the top light will turn green, indicating you are ready to play.

METHOD 3 (Direct Connection - WiFi)

Install E6 on the PC. The SkyTrak will be the default option



S

- STEP 1:** Once E6Golf is installed, insert the Security Dongle in an open USB port. The Operating system should detect the dongle and install the driver.
- STEP 2:** Follow the instructions in the SkyTrak User Guide to place the SkyTrak Unit into Direct Connection Mode
- STEP 3:** Turn on the SkyTrak unit
- STEP 4:** Launch the E6 software
- STEP 5:** Once on the menu page the bottom two SkyTrak LEDs will be green.
- STEP 6:** Select your course or practice range. Once on the range, or course tee, the top green light will turn green, indicating you are ready to play.

Note: When playing E6 in Direct Connection Mode the Internet will not be available on your PC. Also the E6 "Event" Category will not be available.



INSTALLATION

SYSTEM REQUIREMENTS

Your system must meet these requirement in order to run E6Golf. Before installing, check the System Requirements:

E6GOLF PC/LAPTOP

i3, i5, i7 – 2.0Ghz or faster
 4GB RAM | Windows 7, 8, 8.1 or 10
 25GB free hard drive space
 nVidia dedicated graphics
PC GTX 460 or higher with 1GB RAM video memory.
LAPTOP GT 520 or Higher with 1GB RAM video memory.
 DVD drive

E6GOLF SOFTWARE INSTALLATION

STEP 1: Insert E6Golf Disc 1

STEP 2: AutoPlay

SELECT: Run **e6_full.exe**

User Control Access

SELECT: Yes

STEP 3: Welcome to the E6Golf Setup Wizard

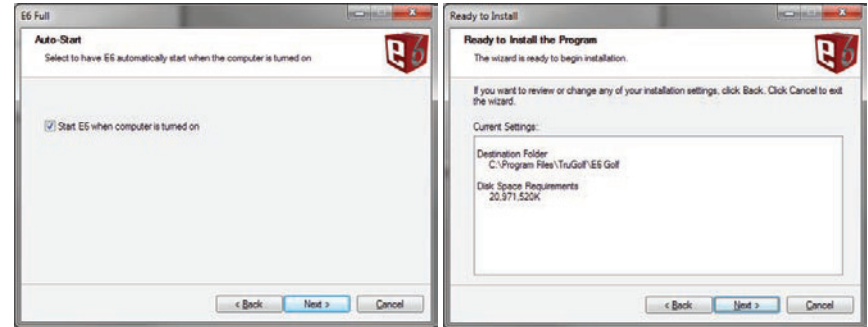
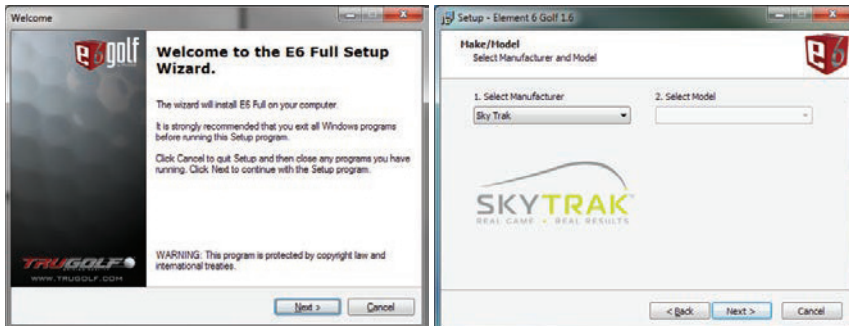
SELECT: Next >

STEP 4: Manufacturer

SELECT: Manufacturer

SELECT: Model (if required)

SELECT: Next >



STEP 5: Auto Start

UNCHECK IF YOU DON'T WANT IT TO AUTOSTART.

SELECT: Next >

STEP 6: Ready to Install Program

SELECT: Next >

STEP 7: Installation Complete

SELECT 'FINISH'

SECURITY DONGLE

THE GREEN USB SECURITY DONGLE IS REQUIRED TO RUN E6GOLF.



A software protection dongle (commonly known as a dongle or key) is an electronic copy protection and content protection device which, when attached to a computer, unlocks software functionality or decodes content.


INSERT THE GREEN SECURITY DONGLE INTO AN OPEN USB PORT ON YOUR COMPUTER AFTER THE INSTALLATION OF THE E6GOLF SOFTWARE HAS FINISHED, BUT PRIOR TO LANUCHING E6GOLF FOR THE FIRST TIME.

For additional information on updating a dongle, please contact your reseller.



GETTING STARTED

LAUNCH E6GOLF

Launch E6Golf from the Windows start menu or from the  icon on the desktop.

MAIN MENU

Navigate the MAIN MENU by TAPPING any of the following menu options:

PLAY - Start or resume a round or event.

1. NEW ROUND - Start a new round of golf.
2. RESUME ROUND - Resume a previously play round of golf.

PRACTICE -

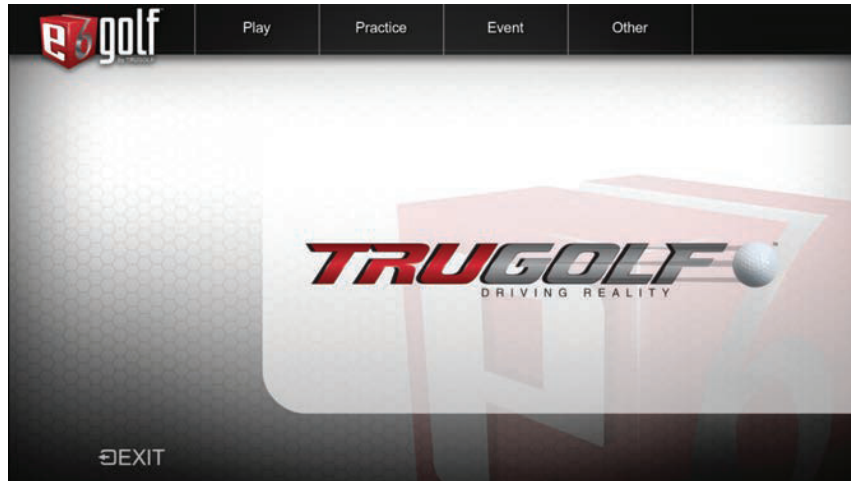
1. DRIVING RANGE
2. PRACTICE SESSION
3. SCORING ZONE
4. CHIP & PUTT

EVENTS - Connect to Online Events

OTHER -

1. INFO - Information about E6GOLF Software, including version number & dongle serial#.
2. SAVE DEFAULTS - Save the current configuration as default.

EXIT - Exit E6GOLF



STARTING A NEW ROUND

PLAY

From the Main Menu select **PLAY**. The following sub menu items are available:

PLAYERS - Add Players to a round

COURSES - Select the desired course to play

SETTINGS - Set conditions and round options

HOLES TO PLAY - Set the desired holes to play

MODES OF PLAY - Select from 36 different styles of play

PREVIOUS MENU  - Return to the previous menu

PLAYERS

1. To add players **SELECT** one of the following options:

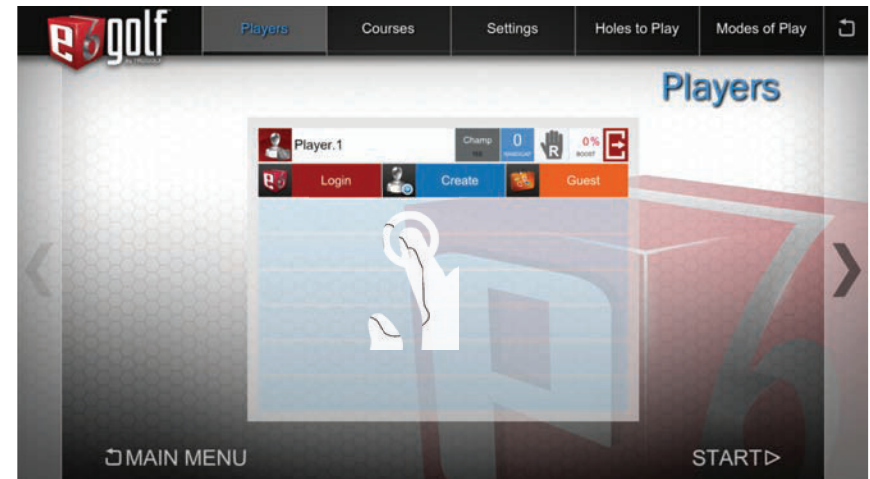
LOGIN - If you already have created a Profile.

CREATE - Create a Profile. A Player Profile is required to track your stats online and to compete in online events.

GUEST - Play *without* creating a profile. Stats are not tracked. Guests *cannot* compete in online events.

2. **CLICK** to **SET** the desired **PROFILE IMAGE**, **NAME**, **COUNTRY**, **TEE**, **HANDICAP**, **HAND**, or **BOOST**.

3. To **REMOVE** a player **TAP** the **LOG OUT** icon on the right.





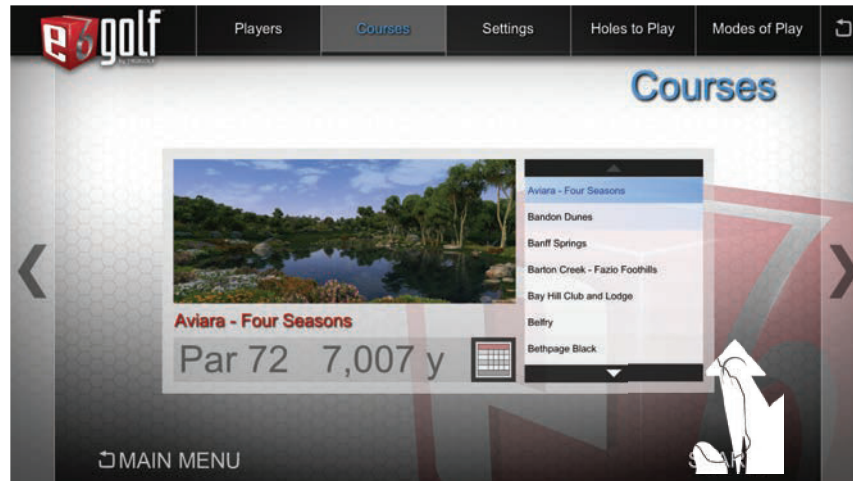
STARTING A NEW ROUND

COURSES

NAVIGATE to the COURSES screen



NOTE: There are multiple ways to navigate between screens: tap menu items, tap directional arrows, or swipe in a horizontal direction.



1. VERTICAL SWIPE or TAP the UP/DOWN ARROW buttons to browse the COURSE LIST.
2. TAP the desired course to SELECT.

Score Card Button- TAP to view the course scorecard



STARTING A NEW ROUND

GOLF COURSE LIST

0

STANDARD COURSE PACK

Banff Springs Resort
 Bay Hill Club & Lodge
 The Belfry
 Bountiful Golf Club
 Castle Pines Golf Club
 Firestone Country Club
 Harbour Town Golf Links
 Mauna Kea Resort
 Par Three Ocean
 Par Three Mountain
 Gleneagles Golf Club
 Pinehurst Country Club #2
 Bethpage Black
 Torrey Pines Golf Club
 Troon North Golf Club

1

COURSE PACK ONE

Barton Creek
 Big Horn
 Big Horn Canyons
 Cog Hill
 Covered Bridge
 Dutch Island
 Prado Beach
 Emerald Dunes
 Latrobe
 Sea Island
 Kiawah Island
 The Tribute at Otsego Club

COMING SOON

2

COURSE PACK TWO

Entrada at Snow Canyon
 Hapuna
 Innisbrook Copperhead
 Kapalua Bay
 Kapalua Station
 Kona Village
 Pelican Hill
 Pinehurst Country Club #8
 Prairie Dunes
 Phoenix Country Club
 Three Canyons
 Valderrama

COMING SOON

3

COURSE PACK THREE

Aviara Resort
 Auburn Grand National RTJ
 Chateau Whistler
 Frankfurt
 Maui
 Oakland Country Club
 Princeville
 Royal Melbourne
 The Judge Capitol Hill RTJ
 Stone Canyon
 Thanksgiving Point
 Westfields

COMING SOON

4

COURSE PACK FOUR

Cabo del Sol
 Cambrian Ridge RTJ
 Gallery North
 Greywolf
 Kauai
 Kiawah Bear
 Loch Lomond
 New South Wales
 Pacific Rim
 Raven at South Mtn
 Skeleton Coast
 Superstition Mountain

COMING SOON

5

COURSE PACK FIVE

Le Grand George
 Taghazout
 Wade Hampton
 Bandon Dunes
 Pacific Dunes
 Silver Lakes - Lakeside
 Silver Lakes - Heartbreaker RTJ
 Silver Lakes - Mindbreaker RTJ
 Silver Lakes - Backbreaker RTJ
 Hokulia
 Panther

COMING SOON

6

INDIVIDUAL COURSES

Holtsmark Golf Club
 Gullstrand Golf Club
 Golf Resort Kunětická Hora
 Club de Golf Le Socier
 Oslo Golf Club
 PGA National

COMING SOON

7

PEBBLE BEACH COURSE

Pebble Beach Golf Links*
 The Links at Spanish Bay@
 Pebble Hill@ Golf Course

COMING SOON

8

ST ANDREWS COURSES

St Andrews Course
 St Andrews New Course
 St Andrews Jubilee Course

COMING SOON



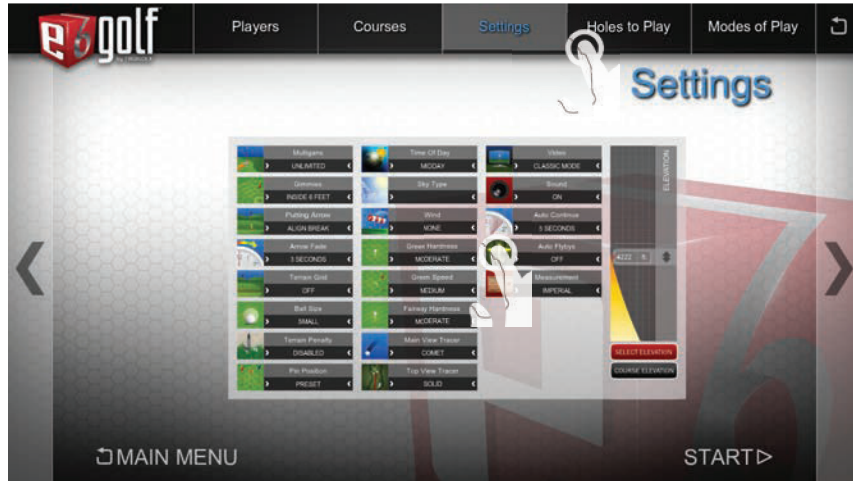
STARTING A NEW ROUND

SETTINGS

NAVIGATE to the SETTINGS screen

NOTE: There are multiple ways to navigate between screens: tap menu items, tap directional arrows, or swipe in a horizontal direction.

TAP ANY BUTTON TO CHANGE ITS DEFAULT SETTING



MULLIGANS - Mulligans are “do-overs” – re hit without penalty.

- Unlimited / None / 1 / 2 / 5 / 10

GIMMIE RANGE - Gimmie Range is the distance within which you automatically hole out with a one-putt.

- Inside 2 / 4 / 6 / 8 / 10 / feet
- Player Decides
- Computer Decides
- Auto score
- Player Putts Out

PUTTING ARROW - Shows the break and elevation changes between the ball and the hole. Red indicates downhill, Green indicates uphill.

- Off
- Play Break - Aligns the Player to the hole, regardless of break.
- Align Break - Aligns the Player in the direction of the break.

PUTTING ARROW FADE - Specifies how long the Putting Arrow will be displayed before fading away. Select Off to always display the Putting Arrow.

- Off / 3 / 5 / 7 / 10 / seconds

GRID - Overlays the terrain to highlight undulations and elevation changes.

- Off / Near Green / Always On

BALL SIZE - Changes the visibility of the golf ball.

- Small / Medium / Large

TERRAIN PENALTY - Imposes a spin modifier based on the grass type and location in the grass.

- Enabled / Disabled

PIN POSITIONS - 6 pin positions for each level of difficulty

- Preset / Easy / Medium / Hard



STARTING A NEW ROUND

TIME OF DAY - Changes the lighting schemes.

- Morning
- Midday
- Afternoon
- Evening

SKY TYPE - Changes the visual appearance of the sky.

- Clear
- Partly Cloudy
- Cloudy
- Random

WIND - Wind intensity affects ball flight

- None
- Breezy
- Windy
- Strong

GREEN HARDNESS - Amount of bounce the golf ball has on the green.

- Soft
- Moderate
- Hard

GREEN SPEED - Amount of roll the golf ball has on the green.

- Slow
- Medium
- Fast

FAIRWAY HARDNESS - Amount of bounce the golf ball has on the fairway.

- Soft
- Moderate
- Hard

MAIN VIEW TRACER - A tracer is a colored line that shows the flight of the ball.

- Solid - Tracers stay permanently visible
- Comet - Tracers fade away
- Off

TOP VIEW TRACERS - A tracer is a colored line that shows the flight of the ball.

- Off / Solid

CAMERA

- Classic Mode - camera does not follow the ball
- Ball Mode - Camera follows the ball
- TV Mode - Camera shows different views

SOUND

- On / Off

AUTO CONTINUE - The length of time before the game automatically continues after a shot.

- Off / 3 / 5 / 7 / 10 / seconds

FLYBYS - These are aerial previews of each new hole.

- On / Off

MEASUREMENT

- Imperial - yards / feet / inches
- Metric - meters / centimeters

ELEVATION - Set the desired elevation

- Select Elevation - Select the desired elevation
- Course Elevation - Play at the actual course elevation



STARTING A NEW ROUND

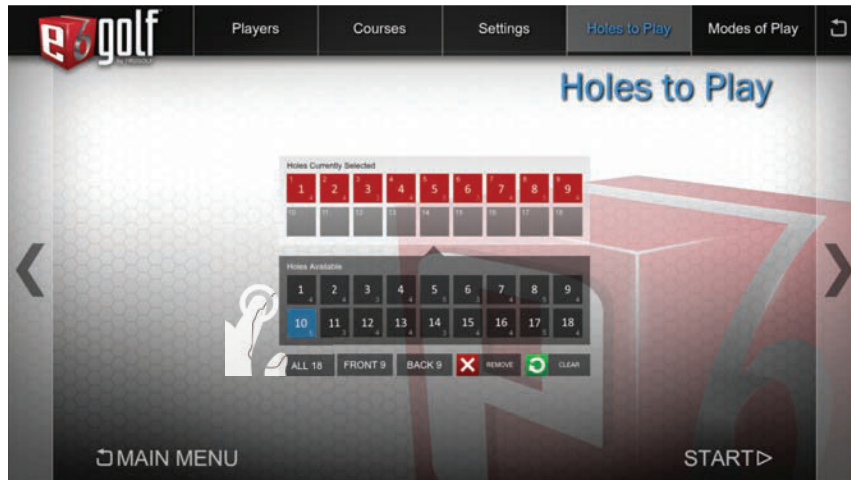
HOLES TO PLAY

NAVIGATE to the HOLES TO PLAY screen

NOTE: There are multiple ways to navigate between screens: tap menu items, tap directional arrows, or swipe in a horizontal direction.

1. By default all 18 holes have been selected to be played in order.
2. Tap **CLEAR** To choose any combination of holes.

HOLES CURRENTLY SELECTED - A red box indicates which hole(s) will be played and in which order. **PAR** is indicated in the Lower Right Corner. **PLAY ORDER** is displayed in the Upper Left Corner of the buttons.



- HOLES AVAILABLE** - Will add hole to next available spot in Holes Currently Selected.
- ALL 18** - Override Holes Currently Selected and play all 18 holes in the correct order.
- FRONT 9** - Override Holes Currently Selected and play **ONLY** the front 9 from the chosen course.
- BACK 9** - Override Holes Currently Selected and play **ONLY** the back 9 from the chosen course.
- REMOVE** - Removes the last hole from Holes Currently Selected window.
- CLEAR** - Clears ALL Holes Currently Selected.



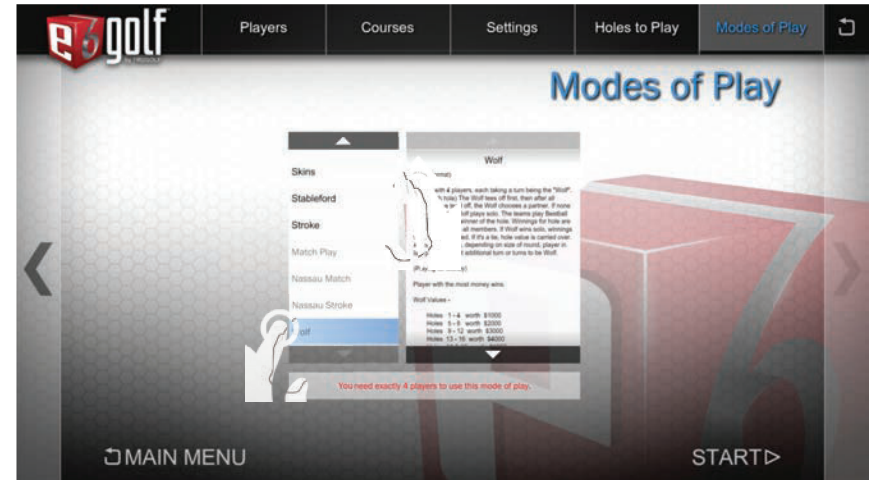
STARTING A NEW ROUND

MODES OF PLAY

NAVIGATE to the MODES OF PLAY screen

NOTE: There are multiple ways to navigate between screens: tap menu items, tap directional arrows, or swipe in a horizontal direction.

1. VERTICAL SWIPE or TAP the UP/DOWN ARROW buttons to browse the LIST.
2. TAP the desired Mode of Play to SELECT.



NOTE: Stroke is the standard mode of play. A description is displayed of the selected Mode.

START

Select **START** to begin the round or to make modifications SELECT any of the sub menu items.

- PLAYERS** - Add Players to a round
- COURSES** - Select the desired course to play
- SETTINGS** - Set conditions and round options
- HOLES TO PLAY** - Set the desired holes to play
- MODES OF PLAY** - Select from 36 different styles of play
- PREVIOUS MENU** ↶ - Return to the previous menu



PLAYING A ROUND ON SCREEN INTERFACE

USER INTERFACE:

- E6 Menu Button
- Information Box
 - Course Name
 - Hole
 - Par
 - Distance from the ball to the pin
 - Player Name
 - Scoring
 - Shot Number
 - Difference in Elevation between the ball and the pin
 - Tracking System Status
 - Wind speed and direction
 - Select Club (only available with some tracking systems)
- Hole Top view



QUICK ACCESS BUTTONS

To access these features, touch/click the indicated area

1. View Scorecard
2. Spot Pin



E6 MENU



To access the in game menu Tap the **E6GOLF MENU ICON** in the **BOTTOM LEFT CORNER** while in **PLAY, PRACTICE OR EVENT MODES**.

ROUND MENU:

MULLIGAN: If available, undo the last shot.

REPLAY: Show a replay of the last shot.

SCORE CARD: Display the score card for the current round.

FLY BY: Show a fly by of the current hole.

NEXT HOLE: Advance ALL players to the next hole; all players receive a set score based on the mode of play.

GRID: On or Off

SPOT PIN: Close-up view of pin location

EXIT CURRENT ROUND: Exit Round

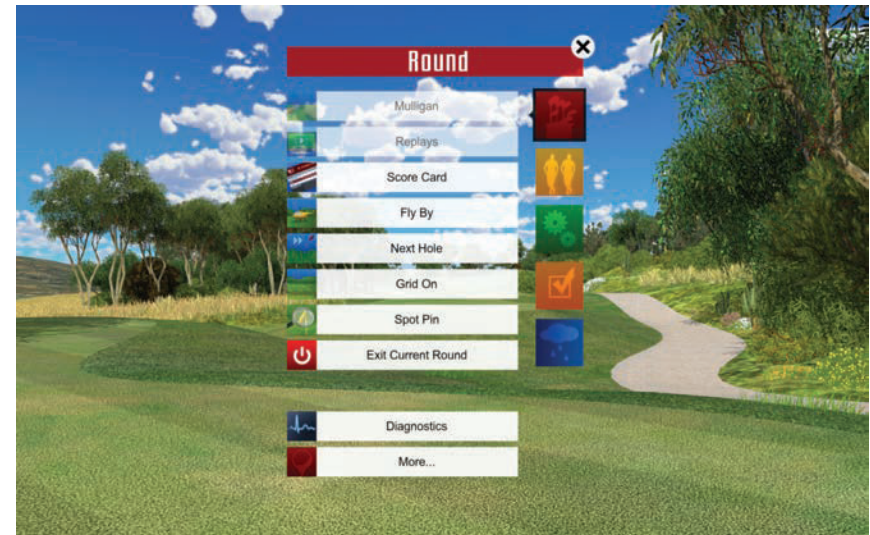
DIAGNOSTICS: Assists in troubleshooting tracking system

MORE: More Round Settings

IN-ROUND PRACTICE: Enter Practice Mode while in-round

MODE OF PLAY RULES: Displays rules for current Mode

BACK: Return to the E6 Menu



PLAYER MENU:

DROP: Drop the ball.

PICK UP: Advance the current player to the next hole and receive a set score based on the mode of play.

CONCEDE: Concede the hole.

NOTE: This option is only available in certain modes of play, such as Match Play.



PLAYING A ROUND

BOOST: Boost your hitting power.

BACK: Return to the E6 Menu.

MANAGE PLAYERS: Add, remove, or change settings of a players

MORE: More Player Menu settings.

STATS: Current Round Stats

LIFETIME STATS: Lifetime stats for a Player (must be logged in).

SKIP OPTIONS:

SKIP PLAYER ONCE: Skip the current Player one time.

SKIP PLAYER TILL END OF HOLE: Allow all other Players to finish the hole before the current Player hits again.

SKIP PLAYER TILL END OF ORDER: Allow all other Players to hit before the current Player.

SKIP TEAM ONCE: Same as Skip Player Once (above) in a Team mode of play.

SKIP TEAM TILL END OF HOLE: See above.

BACK: Return to the E6 Menu.

OPTIONS MENU:

CAMERA MODE: Classic, Ball, or TV Mode

SOUND: On or Off

AUTO CONTINUE: The length of time before the game automatically continues after a shot.

MAIN VIEW TRACERS: Solid, Comet, or Off

TOP VIEW TRACERS: Solid or No Tracer

AUTO FLY BY: These are aerial previews of each new hole. Select On or Off

MEASUREMENT: Imperial or Metric

SETTINGS MENU:

GIMMIES: Select the number of gimmies.

PUTT ARROW: Select Off, Play Break, Align Break

PUTT ARROW FADE: This is the length of time the Putt Arrow is on screen.

GRID: Select On Green, Always On, Always Off

BALL SIZE: Select Small, Medium, or Large

ELEVATION: Select Course Elevation to play the course at its actual elevation or Select Elevation and move the slider.

CONDITIONS MENU:

GREEN SPEEDS: Select Slow, Medium, or Fast

GREENS HARDNESS: Select Soft, Moderate, or Hard

FAIRWAYS HARDNESS: Select Soft, Moderate, or Hard

TERRAIN PENALTY: Enable or Disable

Note: The Terrain Penalty feature allows you to turn the affects of taller grass on your ball ON or OFF.

WEATHER: Select Clear, Partly Cloudy, Cloudy, or Random

WIND: Select No, Breezy, Windy, Strong Wind

NOTE: Wind Speed and Wind Direction can both be specified in more detail in Practice.

TIME OF DAY: Change the time of day. This will dramatically change the lighting on the course.

CLOSE BUTTON: Press Close to take you back to the round.

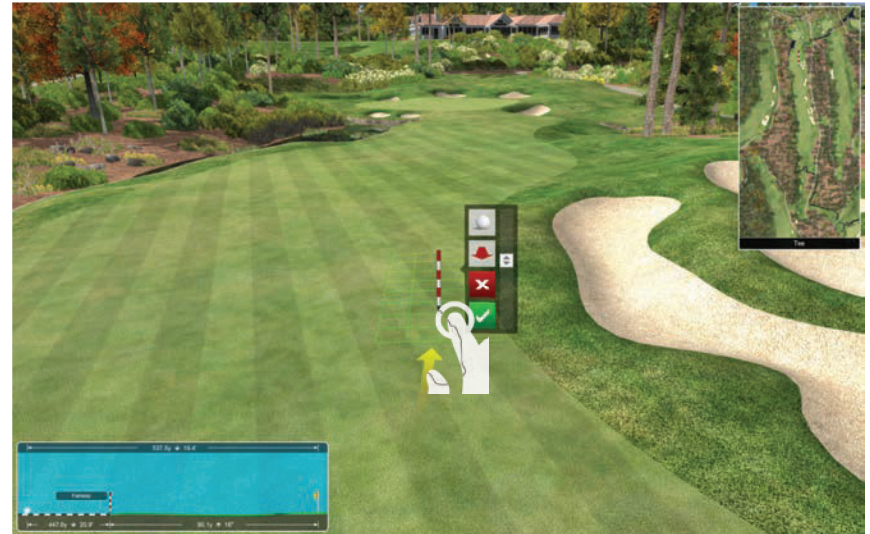



PLAYING A ROUND

AIMING YOUR SHOT


You are automatically aimed at either the center of the fairway or the pin, whichever is appropriate. To adjust the direction you are aimed:

1. Click or touch the terrain either on the course or in the Top View window to display the red and white striped AIM MARKER.
2. Drag the AIM MARKER to where you want to aim.
3. Select the CHECK MARK button.
4. To cancel the alignment choice, select CANCEL (X).



 To reset the aim toward the pin or center of the fairway, display the Aim Marker and then select the RESET button.

 Toggles between viewing the Aim Marker from the direction of the Ball or Flag.

 Zooms the view closer to or farther from the Aim Marker. You can move the slider to zoom in or out.



SWING ANALYSIS: POST SHOT

After a shot, a variety of options are displayed:

CONTINUE: Accept the shot and continue.

NOTE: By default, if the ball is in play, CONTINUE is automatically selected after five seconds. To change this setting go to Options Menu (see Options Menu page 8).

MULLIGAN: If available, select to rehit without penalty.

PENALTY REHIT: If available, select to rehit with a penalty.

NOTE: This is available only after the ball is hit out of play. The errant shot counts for one stroke and there is a one-stroke penalty.

PICKUP: Advance to the next hole and receive a set score dependent on the mode of play.

DROP: If available, drop the ball in the best allowable location.

NOTE: This is available only after the ball is hit out of play and only if there is an acceptable drop location. The errant shot counts for one stroke and there is a one-stroke penalty.



REPLAYS:

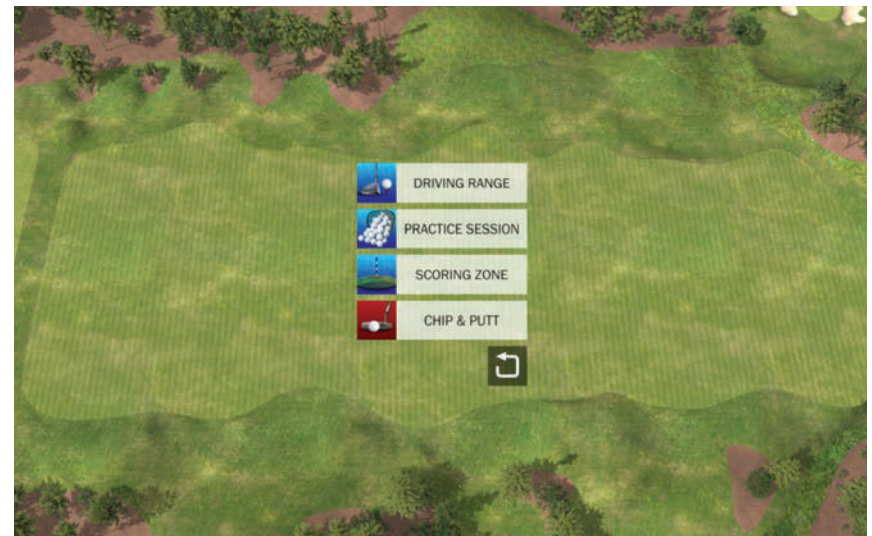
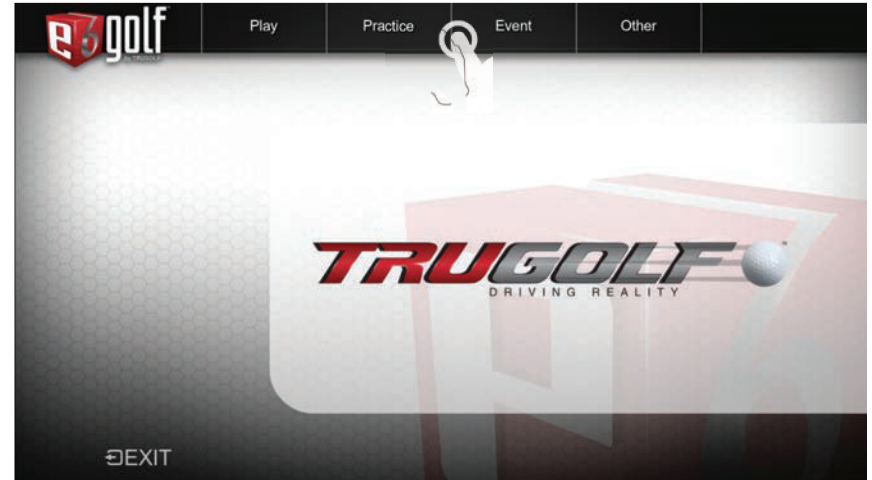
1. TV: Show a replay of the shot from several different views.
2. BALL CAM: Show a replay following the ball flight.
3. FORWARD: Show a replay from the golfer's perspective.
4. REVERSE: Show a replay from where the ball came to rest.



PRACTICE

From the MAIN MENU Select **PRACTICE** then select one of the following options:

1. DRIVING RANGE
2. PRACTICE SESSION
3. SCORING ZONE
4. CHIP & PUTT





DRIVING RANGE

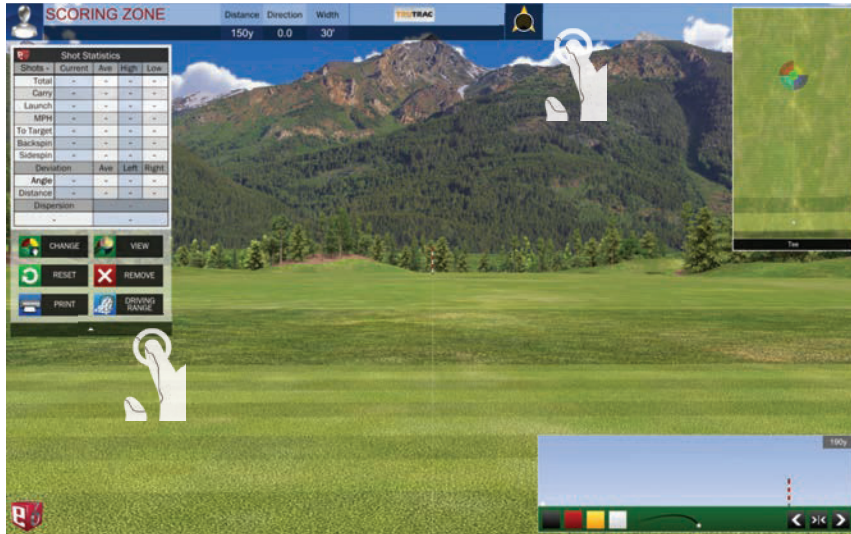
- From the Main Menu, select **PRACTICE** and then **DRIVING RANGE**.
-OR-
From the Practice Area, click or touch the **E6 Cube**.
- Select **CHOOSE PRACTICE AREA**.
- Select **DRIVING RANGE**.

ON SCREEN INTERFACE

SHOT STATISTICS

- **TOTAL:** Total distance of shot(s)
- **CARRY:** Distance of shot(s) in air
- **LAUNCH:** Shot angle
- **MPH:** Ball speed
- **TO TARGET:** Distance from target
- **DEVIATION ANGLE/DISTANCE:** Consistency of shots
- **DISPERSION:** Tracks the spread of multiple shots.
- **SPIN:** Ball Spin (available with some tracking systems)

IMPORTANT: The Shot Statistics Box also has a drop-down menu which is opened by clicking the arrow at the bottom of the box.



WIND GAUGE

- Click or touch the **WIND GAUGE** to adjust the wind settings.
 - Click or touch the perimeter of the Wind Gauge to change the wind direction.
 - Drag the attachment on the right up or down to change the wind speed.
 - Select the **Checkmark** button to accept the new settings; select the **X** button to cancel.
- Note: The wind can only be adjusted in Practice, and not during regular golf play.*



SHOT PROFILE VIEW

- Select a color button to have your shot(s) leave a tracer of that color. This is useful for comparing shots.
- Select the arrow buttons to increase or decrease the area displayed in the TOP VIEW & SHOT PROFILE; select the double arrow button to reset.

CLEAR SHOT STATISTICS

- Click the arrow at the bottom of the Shot Statistics box to open the drop-down menu.
- Select **RESET** to clear all shots -OR- select **REMOVE** to clear only the last shot.

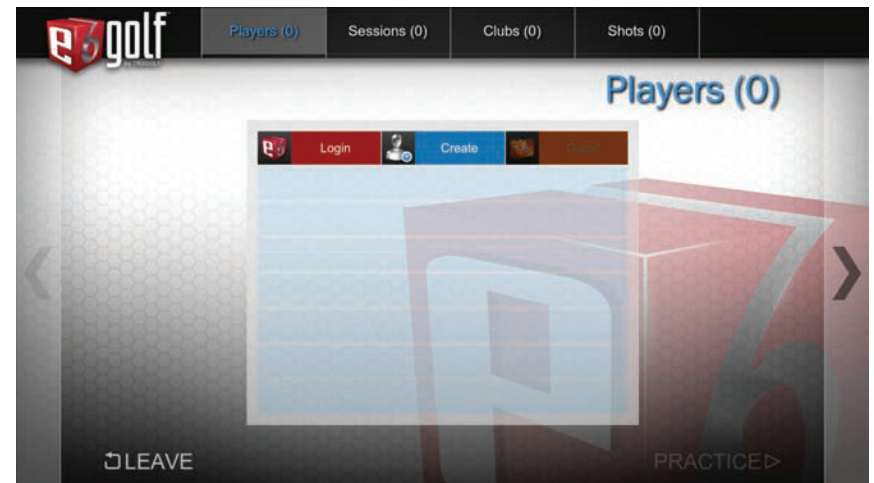
PRACTICE SESSION

Practice sessions are a way to practice inside E6 and store all of your data in the cloud. Add clubs to your bag and track the performance of each over time. Analyze how your practice is affecting your game. You can also compare clubs to each to see which is the best one for you or your student.

- From the Main Menu, select **PRACTICE** and then **PRACTICE SESSION**.
-OR-
From the Practice Area, click or touch the **E6 Cube**.
- Select **CHOOSE PRACTICE AREA**.
- Select **PRACTICE SESSION**.

PLAYERS

- To add players **SELECT** one of the following options:
 - LOGIN** - If you already have created a Profile.
 - CREATE** - Create a Profile. A Player Profile is required to track your stats online and to compete in online events.
- ADD** additional Players (8 players max)
- To **REMOVE** a player **TAP** the LOG OUT icon.





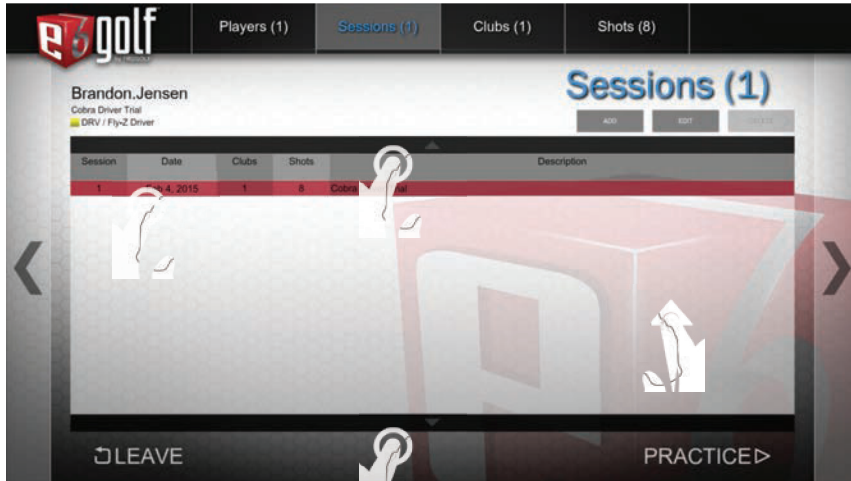
PRACTICE

SESSIONS

NAVIGATE to the SESSIONS screen

NOTE: There are multiple ways to navigate between screens: tap menu items, tap directional arrows, or swipe in a horizontal direction.

1. VERTICAL SWIPE or TAP the UP/DOWN ARROW buttons to browse the LIST.
2. TAP the desired Practice Session to SELECT.
 - SELECT **ADD** to create a new PRACTICE SESSION.
 - SELECT **EDIT** to modify an existing PRACTICE SESSION.
 - SELECT **REMOVE** to delete a PRACTICE SESSION.



CLUBS

NAVIGATE to the CLUBS screen

NOTE: There are multiple ways to navigate between screens: tap menu items, tap directional arrows, or swipe in a horizontal direction.

1. SELECT **ADD** to add a CLUB to the Practice Session.
2. SELECT **EDIT** to modify a CLUB.
3. SELECT **COPY** to duplicate a CLUB.
4. SELECT **REMOVE** to delete the selected CLUB.

ADD/EDIT CLUB

MODIFY any of the below options when you ADD or EDIT a CLUB

- Name
- Manufacturer
- Model
- Club Type
- Shaft Type
- Shaft Flex
- Loft
- Lie
- Color Swatch



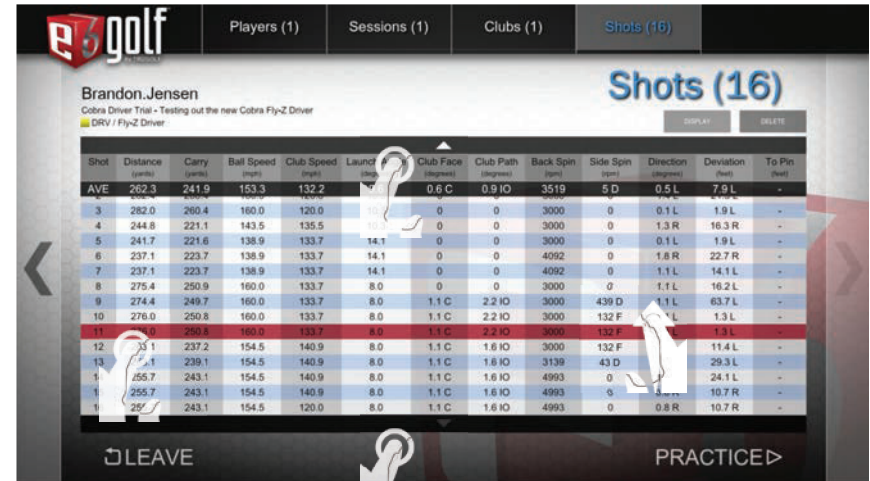
PRACTICE

SHOTS

NAVIGATE to the SHOTS screen

NOTE: There are multiple ways to navigate between screens: tap menu items, tap directional arrows, or swipe in a horizontal direction.

1. VERTICAL SWIPE or TAP the UP/DOWN ARROW buttons to browse the LIST.
2. TAP the desired Practice Session to SELECT.
 - SELECT **DISPLAY** to view the POST SHOT ANALYSIS
 - SELECT **DELETE** to remove a SHOT.



THE SCORING ZONE

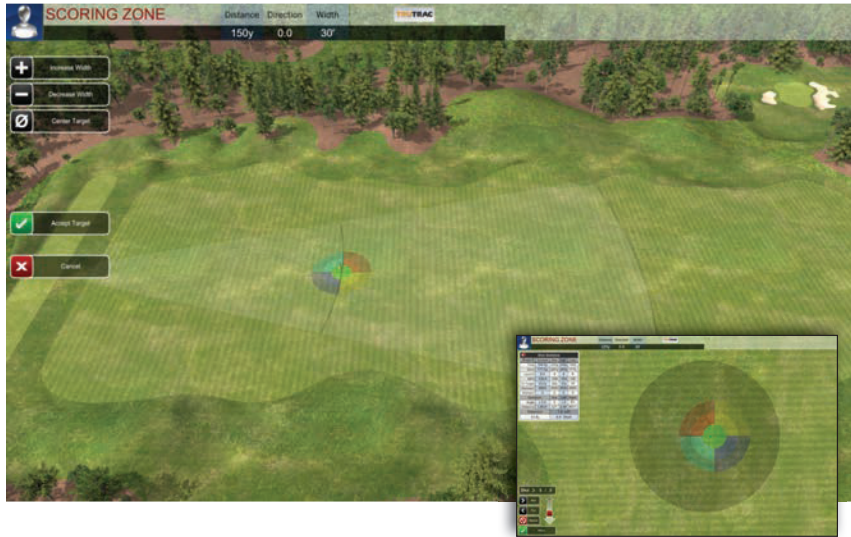
1. From the Main Menu, select **PRACTICE** and then **SCORING ZONE**.
-OR-
From the Practice Area, click or touch the **E6 Cube**.
2. Select **CHOOSE PRACTICE AREA**.
3. Select **SCORING ZONE**.

DISPLAY THE SCORING ZONE

1. On the Driving Range, open the drop-down menu by clicking or touching the arrow at the bottom of the Shot Statistics box.
2. Select **SCORING ZONE**. The Scoring Zone target is displayed on the driving range and in the Top View window.



PRACTICE

**MOVE OR RESIZE THE SCORING ZONE**

1. Open the **DROP-DOWN MENU**.
2. Select **CHANGE**. The following options are now available:
 - Increase Width: Expand the target.
 - Decrease Width: Shrink the target.
 - Center Target: Move the target to the center of the fairway.
3. To move the Target, click or touch and drag it.
4. When finished, select **ACCEPT TARGET**.

VIEW SHOT RESULTS

1. Open the **DROP-DOWN MENU**.
2. Select **VIEW**.
NOTE: The shadowed area shows the Dispersion of shots taken; the crosshairs show the Dispersion midpoint.
3. The Shot box displays the number of shots taken.
4. Select **NEXT** or **PREV** to cycle through the individual shots.
5. Click or touch **REMOVE** to delete whichever shot is highlighted.
6. Drag the slider to zoom in and out.
7. Click or touch **RETURN** to resume hitting.

EXIT THE SCORING ZONE**RETURN TO THE DRIVING RANGE**

1. Open the **DROP-DOWN MENU**.
2. Select **DRIVING RANGE**.

EXIT OR SWITCH PRACTICE AREAS:

1. Click or touch the **E6 CUBE**.
2. Select **EXIT PRACTICE** to exit or **CHOOSE PRACTICE AREA** to switch Practice Areas.



PRACTICE

CHIP & PUTT

1. From the Main Menu, select **PRACTICE** and then **CHIP & PUTT**.
–OR–
From the Practice Area, click or touch the **E6 MENU**, and then select **CHOOSE PRACTICE AREA**.
2. Select **CHIP & PUTT**.
3. Select the **FLAG** button in the top right corner.
4. Move the Flag icon to – or click/touch – where you want the hole to be.
5. Select the **BALL** button.
6. Move the Ball icon to – or click/touch – where you want to putt from.
NOTE: The distance and difference in elevation between the ball and the pin are displayed in the upper right corner.
7. Click the **CHECK MARK** button to accept the settings and start practice.
8. Click the **(X)** button to return to the last setting.

**READ CHIP OR PUTT**

1. Click or touch anywhere on the terrain to display the **AIM MARKER & GRID**.
2. Move the **AIM MARKER & GRID** to highlight the undulations of the terrain.
NOTE: Red indicates a downhill break, green uphill.
3. Click the **BALL** button to toggle between an elevated and ground level view.
4. In the elevated view, click **FLAG** button to toggle between a view from behind the pin and a view from behind the ball.
NOTE: While in the elevated view you can move the slider to zoom in or out.
5. To set up in a direction other than at the pin, you must be at ground level. Click or touch anywhere on the terrain to display the **AIM MARKER & GRID**, move it to where you want to face, and then select the **CHECK MARK** button.
*NOTE: To reset view to face the pin, click or touch the terrain (to display the **AIM MARKER & GRID**) and then click the **FLAG** button.*



CHANGE THE BALL AND/OR PIN POSITION

1. Click the **ARROW** at the bottom of the Shot Statistics box in the upper left corner to open the drop-down menu.
2. Select **CHANGE**.

ONLINE EVENTS

From the **MAIN MENU**, select **EVENT**.

PLAYERS

1. To add players **SELECT** one of the following options:
 - LOGIN** - If you already have created a Profile.
 - CREATE** - Create a Profile. A Player Profile is required to track your stats online and to compete in online events.
 - GUEST** - Guests *cannot* compete in online events.
2. **ADD** additional Players (8 players max)
3. To **REMOVE** a player **TAP** the **LOG OUT** icon.

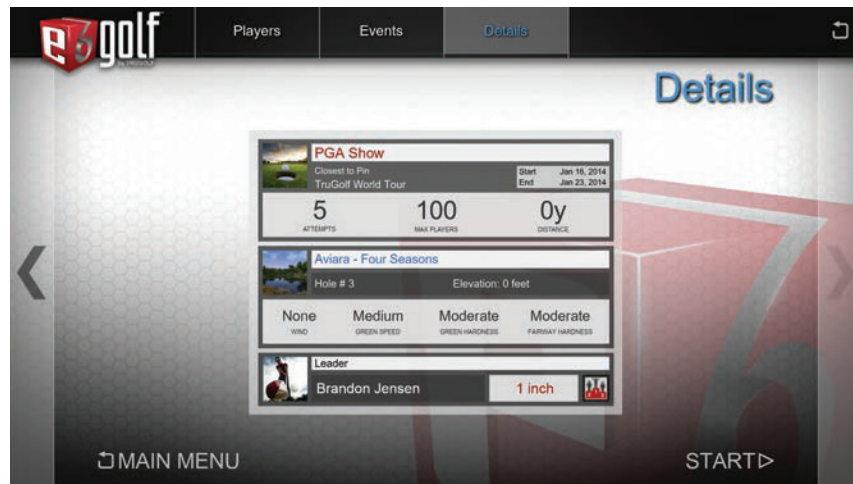
EVENTS

NAVIGATE to the **EVENTS** screen

NOTE: There are multiple ways to navigate between screens: tap menu items, tap directional arrows, or swipe in a horizontal direction.

1. **SELECT** an **EVENT** by **TAPPING** on a row in the **LIST**.
2. **DETAILS** of the Event will be displayed automatically.

DETAILS



START

Select **START** to begin the **EVENT**.

-OR-

NAVIGATE back to **EVENTS** to select another **EVENT**.

NOTE: There are multiple ways to navigate between screens: tap menu items, tap directional arrows, or swipe in a horizontal direction.

CREATE EVENT

CREATED EVENTS ARE ONLY AVAILABLE ON YOUR LOCAL SYSTEM.

From the **MAIN MENU**, select **EVENT**.

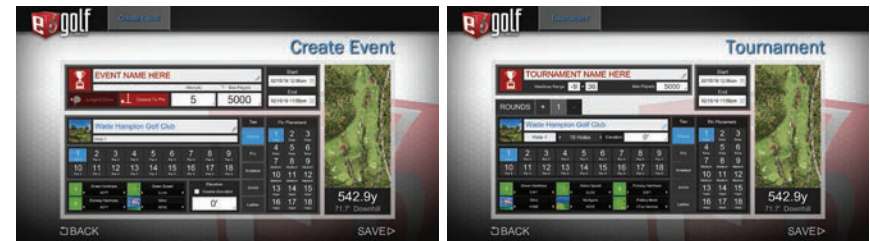
PLAYERS

1. **LOGIN**
2. **NAVIGATE** to **EVENTS**

NOTE: There are multiple ways to navigate between screens: tap menu items, tap directional arrows, or swipe in a horizontal direction.

EVENTS

1. **SELECT** **CREATE**.
2. **SELECT** the type of **EVENT**.
 - a. Closest to the Pin
 - b. Longest Drive
 - c. Stroke Play
3. Set the desired **OPTIONS** for the **EVENT**.
4. Tap **SAVE**



5. Select the **EVENT** by **TAPPING** on the row in the **LIST**.
6. **DETAILS** of the Event will be displayed automatically.
7. Select **START** to begin the **EVENT**.



System Requirements:

i3, i5, i7 (2.0Ghz or equivalent), 4GB RAM,
25GB free hard drive space, DVD drive, Windows 7|8|10
1GB NVIDIA GTX 460 / ATI Radeon HD 6000 Series or higher



E6GOLF.COM